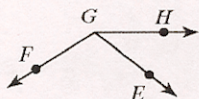
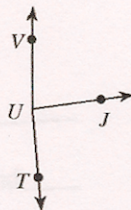


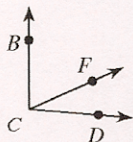
- 11)  $m\angle HGF = 16x + 4$ ,  $m\angle EGF = 110^\circ$ ,  
and  $m\angle HGE = 3x + 11$ . Find  $x$ .



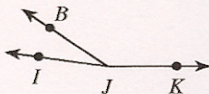
- 12)  $m\angle VUT = 175^\circ$ ,  $m\angle VUJ = 17x - 3$ ,  
and  $m\angle JUT = 17x + 8$ . Find  $x$ .



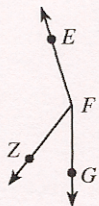
- 13)  $m\angle FCD = x + 41$ ,  $m\angle BCF = x + 78$ ,  
and  $m\angle BCD = 95^\circ$ . Find  $x$ .



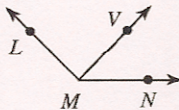
- 14) Find  $x$  if  $m\angle BJK = 146 + 2x$ ,  
 $m\angle IJK = 172^\circ$ , and  $m\angle IJB = 2x + 26$ .



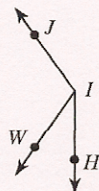
- 15)  $m\angle GFZ = 38^\circ$ ,  $m\angle ZFE = 2x + 125$ ,  
and  $m\angle GFE = x + 163$ . Find  $x$ .



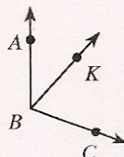
- 16) Find  $x$  if  $m\angle LMN = 135^\circ$ ,  
 $m\angle LMV = -1 + 45x$ , and  $m\angle VMN = 23x$ .



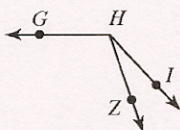
- 17) Find  $m\angle HIW$  if  $m\angle WIJ = 10x$ ,  
 $m\angle HIJ = 145^\circ$ , and  $m\angle HIW = 2x + 13$ .



- 18)  $m\angle ABC = 17x + 8$ ,  $m\angle ABK = 42^\circ$ ,  
and  $m\angle KBC = 12x - 4$ . Find  $m\angle ABC$ .



- 19)  $m\angle ZHG = 11x - 1$ ,  $m\angle IHZ = 24^\circ$ ,  
and  $m\angle IHG = 12x + 13$ . Find  $m\angle IHG$ .



- 20)  $m\angle GFN = 4x + 10$ ,  $m\angle NFE = 14x + 3$ ,  
and  $m\angle GFE = 157^\circ$ . Find  $m\angle NFE$ .

